

# PORTAGE PARK

NEIGHBORHOOD ASSOCIATION

# News

MAY 2003

## Meetings and Announcements

### Portage Park Neighborhood Association

The next meeting will be, **May 12TH, 7:30PM** at the Portage Park Fieldhouse, 4150 N. Long. Luann Hamilton, Director of Transportation Planning with CDOT will speak about the proposed Mid-City Transit Way.

Attending members get a chance to win great door prizes donated by local business.

### Jefferson Park Neighborhood Association

The next meeting will be, **May 22TH, 7:30PM** at the Jefferson Park Field House.

### C.A.P.S. Meetings

**Beat 1624** Next meeting is Wednesday, **May 28TH**, at Biagio's, 4242 N. Central at 7:00 PM.

**Beat 1633** Next meeting is Tuesday, **May 20TH**, at Merrimack Park, 6343 W. Irving Park at 7:00 PM.

**Beat 1634** Next meeting is Thursday, **May 29TH**, at Belmont Craigin Library, 5108 W. Belmont, at 7:00 PM.

### PPNA News Via E-Mail

If you would like to receive this newsletter in PDF format send a request to [ppna\\_board@hotmail.com](mailto:ppna_board@hotmail.com)

### PPNA On-Line

Log-on to for the most current info from the PPNA at [www.portage-park.org](http://www.portage-park.org)

### Look Inside!

Parents Coffee and Mom's Night Out information can now be found on the bulletin board on page 5.

## City, Developers Present Plans for Klee Redevelopment Project

by Mark W. Anderson

The City of Chicago, local aldermen, and candidate developers presented project overviews for the future of the Klee Building to area residents at a recent community forum held at the LaSalle Bank Auditorium on April 29th.

The three developers, along with Aldermen Levar and Allen and representatives from the City of Chicago Department of Planning and Development, showed projected floor plans, building elevations, and visions for the surrounding areas, as well as discussing potential uses for retail spaces, parking locations and residential mixes to a gathering of more than 100 people. Three developers, each of whom responded to the City's Request for Proposal process, in turn presented slide shows and answered questions from the floor during the two hour session.

Each of the three developer's plans differed somewhat, some more so than others. All three plans included a mix of residential and retail space, as well as plans for parking and significant improvements to the building's exterior and streetscape. The plans also varied on the number, size, and type of residential units, as well as methods to handle parking needs and funding mixes needed to complete the project.

Two of the proposals, those generated by G&A Construction and Development and a partnership between SEJ Development and Poter Construction (operating as Chicago Klee LLC), included a more traditional condominium development with a larger, national retailer on the lower floors. The third, a proposal created by the firm of Puseteri Sandberg in conjunction with the Portage Park Center for the Arts and known as Klee Fine Arts Building, was geared towards artists as residents, with more mixed, neighborhood-based retail in the lower areas. Only G&A Construction's proposal was anticipated to be funded solely by private dollars, while the other two anticipated requiring a portion of city assistance.

G&A Construction presented a proposal that included a portion of the lower floors devoted to commercial space, along with 82 residential condominium units. To accommodate the number of residences, their proposal included the building of an additional six-story structure north of the Klee, along Cicero, that spans two already existing businesses. Much of the focus of G&A's proposal included the incorporation of "green technologies," including a proposal for potentially three roof gardens, including - continued pg 2

## CDOT Director to Discuss Mid City Transit Way Plan at PPNA Public Meeting

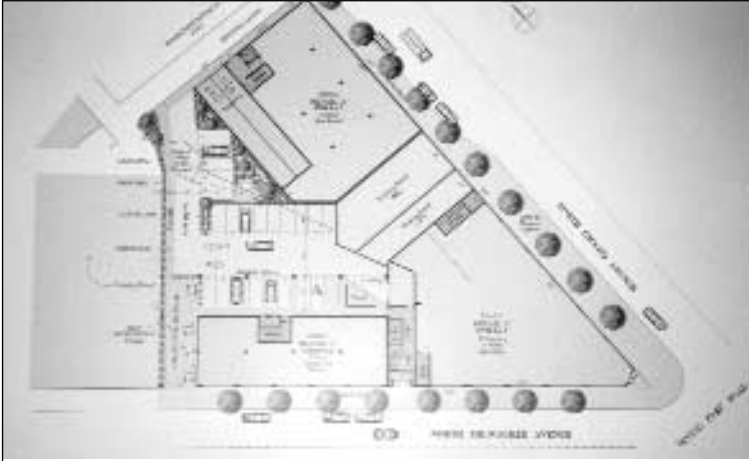
By Patrick Villalobos

Luann Hamilton, Director of Transportation Planning for the Chicago Department of Transportation, is scheduled to speak to the community about the proposed Mid City Transit Way (MCTW). Her presentation will take place during the next regularly scheduled public meeting of PPNA on May 12th, at 7:30 pm at the Portage Park Fieldhouse, 4150 N. Long.

The current MCTW project is a revival of an earlier idea championed by the late Mayor Richard J. Daley decades earlier, and includes a 22 mile traffic corridor to start at the Jefferson Park Bus station, follow along the expressway, and branch off at Montrose to head due south to the Ford Shopping Center. Additional options under consideration include a bus way, light commuter

rail, or a truck way slated to follow roughly the same path, with currently existing railroad right-of-ways slated to be utilized for the project. Currently, a number of feasibility studies are in process, and the project is intended to provide access to jobs at Ford City, Midway and O'Hare Airports to those living in other parts of the city while sparking development in underutilized industrial properties along the route.

Based on current information circulating concerning this project, any potential configuration may end up affecting our community greatly. PPNA encourages everyone in the community to come to the May 12th meeting to hear firsthand information about this important project.



The above floor plan and elevation show the Chicago Klee, LLC vision for the development. It includes a 5 story addition along the Millwaukee Ave. side of the property and 64 condominiums.

continued from cover - at least one slated to be accessible to the building's residents.

The partnership known as Chicago Klee LLC intends to utilize all of the available space on the ground floor for retail, and plans to extend the development to include two additional parcels it currently owns adjacent to the site defined in the RFP. Klee LLC's proposal also calls for 64 condominiums and a pedway helping to connect Cicero and Milwaukee Avenues, outdoor parking nestled inside the overall site, and potential restaurant space on one of the additionally-owned parcels along Milwaukee Ave.

Klee Fine Art's plans differ in the type of residents the developers envision as occupants and in the anticipated mix of retailers drawn to the site. Hoping that an infusion of non-traditional residents such as artists will enable the Six Corners commercial district to attract a wider range of potential retailers than might be currently attracted to the area, they have partnered with the Portage Park Center for the Arts to propose a set of residences that include studio and one-, two-, and three-bedroom units, coupled with additional artist work spaces in the basement. Klee Fine Art's proposal includes 34 units overall, with the Portage Park Center for the Arts participating in the process of certifying residential occupancy requirements.

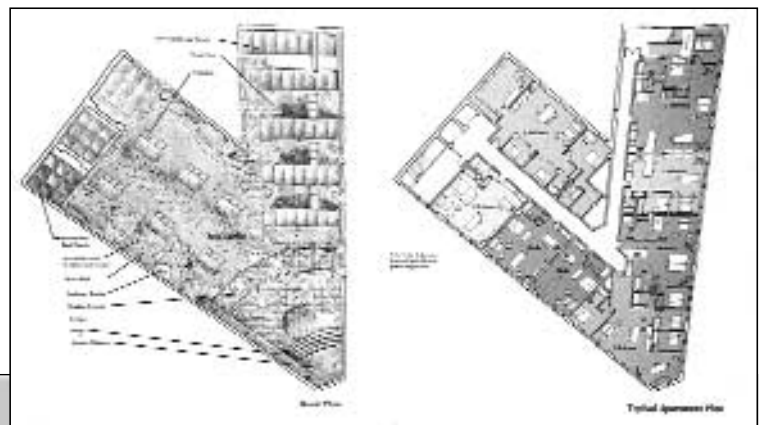
Each of the developers spoke of the possible range of prices associated with the residential aspect of the project. Prices ranged from \$134,000 to \$200,000, with one developer proposing rental units priced from \$475.00 to \$1,200.00.

High on the list of concerns for those who attending the meeting were such issues as retail uses, traffic congestion, the timeline for the project's completion, and parking. Among the issues brought up during the question and answer portion of the meeting were concerns over the potential for the retail spaces to remain unused during a portion of the development process, despite

each of the presenter's stated intentions to ensure that the retail spaces would be of primary concern. In addition, a number of residents asked the city representatives what the criteria was for the selection process, and the timelines for the project's completion. During her opening remarks, Danita Childers, Assistant Commissioner of the Department of Planning and Development, listed financial capability, development experience, and overall quality of proposals as key considerations in the selection process. Childers also indicated that the city expected to identify a winning proposal within the next sixty days.

But it was issues surrounding traffic congestion and parking that appeared foremost in many questioners' minds during the meeting. All three of the developers made provisions for "one-to-one" parking accommodations for residential units. G&A said that they would provide five additional spaces for retail use, while Chicago Klee LLC indicated that they would provide an additional 28 retail parking spaces. For their part, Klee Fine Arts expected to provide no additional parking spaces for retail. However, their plans were directly linked to their approach being "low impact and high benefit," and believe their proposal may draw less auto-based traffic. In fact, all three of the developer's plans for retail parking were roughly tied to their visions for the ultimate use of the available retail space above and beyond those parking spaces dedicated to residents. While not denying that any redevelopment that occurs may possibly increase the amount of traffic congestion in the immediate area, each of the developers also felt strongly that the positive aspects of their proposals would offset any additional congestion that may result.

Throughout the meeting, Aldermen Levar and Allen, along with representatives of the city and the developers alike, expressed their strong commitment to keeping the community at large involved in the process of redeveloping the Klee Building, and ensuring that the voice of area residents and business owners are heard. The overall tone of the meeting was one of cooperation and openness, with Ms. Childers mentioning the fact that all of the candidate developers appearing at a community meeting was unprecedented for the Department of Planning and Development. For its part, the Portage Park Neighborhood Association applauds everyone concerned for their commitment to the community and an open redevelopment process.



The Klee Fine Arts proposal includes 34 units and takes a "low impact, high benefit" approach by including such features as solar hot water heaters and a rooftop garden.

## Rewrite of the City of Chicago Zoning Ordinance Continues

On April 10, 2003, the Acting Zoning Administration held a public hearing at City Hall to present Module 3 of the rewrite of the City of Chicago Zoning Ordinance. Public testimony was received from many citizens who commented on the 5 sections presented: Introductory Provisions, Planned Developments, Review and Approval Procedures, Non-Conformities, and Enforcement and Penalties.

Of interest to PPNA, Economic Development Committee is the section related to Review and Approval Procedures. The new zoning ordinance now includes specific criteria against which the City must judge Administrative Changes (site by site rezoning and special-use permits) which include the following:

1. Whether the proposed rezoning is consistent with any plans for the area that have been adopted by the Plan Commission or approved by the City Council. (to date Portage Park does not hold any approved community plans against which rezoning can be evaluated)
2. Whether the proposed rezoning is appropriate because of significant changes in the character of the area due to public facility capacity, other rezoning, or growth and development trends (does not address undesirable planning that may have already occurred and should be discouraged)
3. Whether the proposed development is compatible with the character of the surrounding area in terms of uses, density and building scale (does not address undesirable developments that may have already occurred and should be discouraged)
4. Whether the proposed zoning classification is compatible with surrounding zoning
5. Whether public facilities and services will be adequate to serve the propose development.

Establishing criteria is a great improvement to the review process, however, inclusion of community input during the formation of the City's recommendation is completely lacking. The new zoning ordinance outlines the review process as follows: 1. Application Filing, 2. Zoning Administrator Review and Recommendation, 3. Department of Planning and Development Review and Recommendation, 4. Public Hearing Notice, 5. Committee on Zoning Hearing and 6. City Council Decision. At no time during this process is the City obligated to solicit the opinions of the local stakeholders. Citizens are allowed only to testify at the Committee on Zoning Hearing. However, at this point both the Zoning Administrator and the Department of Planning and Development have already formulated and presented their recommendations. Testimony at this juncture is typically ineffective.

Several people who testified at the Module 3 hearing in April, requested continued community involvement in the rezoning process beyond the rewrite of the ordinance. PPNA EDC suggested the inclusion of Local Zoning Advisory Boards who would be consulted by the Zoning Administrator and the Department of Planning and Development during their review process to understand the needs and wants of the local stakeholders in developing their recommendation. Public testimony will be taken into account as the committee continues to refine the sections of the new zoning ordinance.

Interested in the revisions to the City of Chicago Zoning Ordinance, check on line at [www.cityofchicago.org/Mayor/Zoning](http://www.cityofchicago.org/Mayor/Zoning)

## OIPA Hosts Preservation Chicago Speaker

The Old Irving Park Association will meet on Monday, May 12th, at the Salvation Army, Belle Plaine and Pulaski. Featured guests will be Preservation Chicago, a not-for-profit advocacy group working to save our historic buildings from the wrecking ball. Their presentation, "Chicago's Vanishing Urban Corners", features slides that illustrate how intact mixed-use urban corners contribute to the vitality of an urban neighborhood. The Klafter Building at Milwaukee and Montrose is one of the successes and is illustrated in Preservation Chicago's presentation.

Many examples of lost Chicago corners will be shown as well. All are invited to come learn how we can help save our business districts and build healthy, revitalized communities. Limited free parking available. For more information contact Gayle Christensen, 773/286-6974.

# Smithe & Shanahan

Home Furnishing Specialists Since 1945

Bonnie Williams  
Design Consultant

5454 W. Belmont  
Chicago, IL 60641

(773) 685-3900

## Parkview Dental Care

4020 N Central Ave.  
Chicago, IL 60634

David E. Wojtowicz DDS David E. Bertagna DDS

773 777-1855

773 736-1406

Cosmetic and Restorative Dentistry for the Entire Family  
Major Insurance Plans Accepted

## Evans Financial Group

Your Team at Prudential Securities

Bruce L. Evans  
Sr. VP-Investments

Betty K. Baker  
Financial Advisor

### Prudential Securities Incorporated

940 Haverford Road  
Bryn Mawr, PA 19010  
610-526-0271/0260/0225  
800-544-4926  
Fax 610-526-0202  
betty\_baker@prusec.com



© 3/02 Securities products and services are offered by Prudential Securities Incorporated, member SIPC, a Prudential company. Prudential Financial is a service mark of The Prudential Insurance Company of America, Newark, NJ, and its affiliates. www.pru.com



Milwaukee and Warner Avenue  
Exclusive Listing! Call Jan at 251-7433



Authentic Ecuadorian Cuisine in a Relaxing Atmosphere

# L A P E Ñ A

steaks ≈ seafood ≈ live music ≈ full bar

Tues. & Weds. 11a.m. to 11p.m.

Thurs.-Sun. 11a.m. to 2a.m.

4212 N Milwaukee Ave., Chicago

773.545.7022

[www.lapenachicago.com](http://www.lapenachicago.com)



# Garden Club Update

The next Portage Park Garden Club Meeting will be on Tuesday May 20th, at 6:30 PM. The location has yet to be determined. Call Gerard at 773-736-3076 for more information.

Do not forget to put your spring clean-up waste into bluebags. I find the 7 count bags to be the best for this. The bags cost about \$2.00 for seven, so that is \$0.29 a bag. A very small price to pay to help the city and the environment.

Our average Frost Free Day in the Chicago area is May 15th. But, do not forget that last year we had a frost about a week after that. It is important that you listen to the weather reports and take care of your plants.

A lot of plant sales are coming up in May. The Chicago Botanic Garden has its "Bloomin Sale" on May 17th, 18th at 10:00 AM. Kilborn Park Greenhouse has an organic plant sale on May 10th, 11th at 10:00 AM. The Garfield Park Conservatory has the "Green and Growing Plant Sale" on May 10th at 10:00 AM.

## MAY LAWN CARE (from C.B.G. web)

• Mow lawn at 2 to 2-1/2 inches, removing one-third or less of the leaf blade. Leave clippings to return nutrients to the soil or add to compost heap, especially if clippings are thick and wet. If you are applying grass seed, do not use a pre-emergent weed killer in the same area.

• Fertilize lawn in mid-May if necessary. Late fall is an alternative time to fertilize. Monitor for weeds and hand pull or spot treat accordingly.

## MAY OUTDOOR GARDENING (from C.B.G. web)

• Plant warm-season flowering annuals, vines, herbs and vegetables after the Chicago area's average last frost date of May 15. Cautious gardeners often wait until Memorial Day before setting out cold-sensitive plants such as tomatoes, peppers, eggplants and squash. Pinch back one-third of new growth to encourage stocky habit (except vines). Be sure newly purchased annuals have been hardened off properly before planting them outside. Avoid fertilizing newly planted annuals for a few weeks.

## 16th District Hosts 3rd Annual Bike Rodeo

Chicago Police Departments 16th Police Station will host its 3rd annual Bike Rodeo on Saturday June 7th from 10am - 2pm at the Police Station 5151 North Milwaukee Avenue.

Festivities include Bike Safety Checks, safety obstacles courses, bike stunt team shows, bike registration raffles and prizes. For more information, please contact the 16th CAPS office at (312) 742-4521.

## Thank You's & Reminders from the Irving Park YMCA

### THANK YOU

The Irving Park YMCA would like to thank Rudy's Bicycle and Fitness Shop, Lutheran General Hospital- Children's Resource Center and the Secretary of State- Safety Traffic Unit- for participating in the Community Bicycle Safety Family Night at the Irving Park YMCA on April 11, 2003. Together these individuals- have provided children in the community with the bicycle tools and information they need- to be safe this summer!

### REMINDERS

1. Mike Lackenbach, our Fitness & Aquatics Director, would like to invite everyone to come and see the exciting new changes that are being made in the Cardiovascular Room. If you have never seen it, stop by and get a tour, or if you are already a member and have not been by in a while, come back!

2. Mark your calendars! The Irving Park YMCA will be holding a Silent Auction on Wednesday, June 11th from 6:30-8:30pm to raise money for our Annual Campaign. Please join us and bid on some wonderful items!

3. We will again be hosting our annual Golf Outing, open to anyone, on June 19th at the Village Green Golf Course in Mundelein, IL. Please contact Mike Lackenbach if you would like more information.

4. There are still some spots left in all our Summer Camp programs for children ages 3 years old to 16 years old. If your child is looking for something fun to do this summer- come visit the Irving Park YMCA!

**For more information, please contact the Irving Park YMCA at (773) 777-7500.**

## Kilborn Park Hosts Plant Sale and Potting Classes

Kilbourn Park 3501 North Kilbourn Avenue will host it's 8th Annual Organic Plant Sale on Saturday May 10th from 10am - 3pm and Sunday May 11th from 10am - 12pm. This neighborhood favorite offers a huge variety of heirloom tomatoes, pepper, eggplant, herbs, flowers and more. For additional information please call Kilbourn Park at (312) 742-7624

Kilbourn Park will host a container planting class on Thursday Evenings beginning May 22nd running thru June 6th from 6:30pm - 8pm the cost of this class is \$35.00 for more information please contact Kilbourn Park at (312)742-7624

Get Involved in your Neighborhood! Join the PPNA Today and Make a Difference.

tap into  
your natural  
energy source

cardio strength stretch



fresh moves. new music.  
pure motivation.

jazzercise  
It shows.

Try an 8 week pass  
for only \$55 (Save \$20!)

For Information, call Sherrie  
(773) 282-1895

MON. & WED. 7PM, TUES. 6:30PM, SAT. 9AM.

SESSIONS HELD AT:

Faith United Church of Christ  
5051 W. Belle Plaine

Where are your photos?



Photo-safe Scrapbook Photo Albums  
Classes and Workshops  
Business Opportunities

Debra Sitar  
Independent Consultant  
(773) 685-9029

Visit [www.creativememories.com](http://www.creativememories.com) or call  
the Creative Memories Home Office  
to find a Consultant near you.  
(800) 341-5275



## Boy Scouts and Summer Camp

Summer is just around the corner and for Boy Scouts that means summer camp.

Boy Scouts is for boys ages 11 to 18. Boy Scouting is a deigned to build self-esteem, self-reliance and self-respect through a blend of outdoor experiences, educational and instructional skills, recognition, value building and fun. Among the activities offered are more than 120 hobby and career skills available through the Merit Badge program.

Summer camp is a wonderful time for boys to earn merit badges such as horsemanship, canoeing, sailing, or swimming just to name a few. It is an opportunity for boys to leave the city, cars, T.V. and just sitting around. At summer camp there is hiking, fishing, canoeing, archery, rifle range and all sorts of activities that you can only find at camp.

The Chicago Area Council owns and operates two camps: Hoover Outdoor Recreational Facility in Yorkville IL. and Owasippe Scout Reservation in Michigan. Owasippe is the oldest Boy Scout Camp in the country and is 5000 acres of pristine woodlands and lakes.

Boy Scout Troops usually go to summer camp for one or two weeks. If you know of a boy that would be interested in Boy Scouts and opportunities like summer camp, call Joe at 312-421-8800 ext 213 for a Boy Scout Troop near you.

## The 4TH Annual Portage Park 4TH of July Children's Parade and Picnic

The Portage Park Neighborhood Association and the Chicago Park District is sponsoring a children's parade and picnic on Sunday June 29th from 9am-12pm. The parade will begin at Dickinson Park (Belle Plaine and Dickinson Ave) and travel west on Berateau Avenue to Portage Park where the children will enjoy hot dogs and ice cream. Entertainment will be clowns, magicians, face painters and a Dixieland band. Children are asked to participate by decorating themselves, their bikes, trikes and wagons in a patriotic theme and marching in the parade. Parade participants should arrive at Dickinson Park no later than 8:45am. Neighbors are asked to participate by moving their vehicles off the parade route from 8:30am - 10am. Please note that Berateau Avenue will be closed briefly from Long to Milwaukee Ave during the parade.



The 2002 t-shirt design created by Jill Arena. 300 shirts were given away to participants and volunteers.

Please come out and show your support of our children and the neighborhood by cheering on our little ones as they celebrate this national holiday. For more information or to volunteer contact Adrienne O'Brien at (773) 427-0949.

## Football and Cheerleading Registration Begins

Northwest Chicago Junior Football Association will hold Football and Cheerleading Registration (for grammar school students) Flag Football (5yr-8yr), Traveling football 7yr-14yr) and Cheerleading 5yr - 14yr) at Portage Park every Saturday beginning on May 3rd thru June 21st from 10am -1pm. For additional information please call 725-9628 or e-mail them at [www.eteamz.com/ncjfa](http://www.eteamz.com/ncjfa)



## CLAY CLASSES PARTIES GALLERY

Register now for Summer Art Camp!

4754 N. MILWAUKEE AVE.  
773-685-CLAY

## EVERYTHING FOR CHILDREN

Turn your gently used toys, clothing & equipment into

# \$CASH\$

Sizes 0-10  
Toys, Furniture  
& Accessories

4266 N. Milwaukee Ave.  
2 blocks south of Montrose  
Mon thru Sat 10-5, Fri 11-6

(773) 777-2200

## FIRST SECONDS RESALE



19 years of resale experience



Billy Caldwell  
Post 806



American Legion --- 5116 W. Irving Park  
Chicago, IL 60641 - Phone: 773 - 545 - 2187

We are located right in your neighborhood !  
Are you eligible to join one of the largest veterans organizations in the nation? Our Post is always looking for new Members ! Men and women, if you have served in any military branch of service you may be eligible. We also have an Auxiliary. Call, leave a message and we will get back to you.

## RUDOLPH LASS

Teacher of Piano, Keyboard, Organ and Voice

Lessons in your home or at  
A#(Sharp) Chicago Music Studio  
5320 West Lawrence Avenue

(773) 622-1688

## Faith United Church of Christ

Sunday School 9:30am  
Sunday Worship 10:30am  
Wednesday Bible Study 7:30pm

PASTOR: Rev. Kate Maver

5051 WEST BELLE PLAINE CHICAGO IL 60641

P 773 283 8545 F 773 283 0994



**Portage Park Neighborhood Association Financial Report**  
**Balance Sheet As of April 14, 2003**

**ASSETS**

LaSalle Checking Account . . . . . \$2,146.10  
 Total Assets as of 10 March 2003 . . . . . \$2,146.10

**REVENUE** February 1st to March 1st, 2003

Advertising Revenue . . . . . \$70.00  
 Membership Revenue . . . . . \$24.00  
 Total Revenue . . . . . \$94.00

**EXPENSES** February 1st to March 1st, 2003

Newsletter Expense . . . . . \$712.00  
 Miscellaneous Expense . . . . . \$340.00  
 Total Expenses . . . . . \$1,052.00

**Why Join today?**

Starting this month members attending the next public meeting get a chance to win great door prizes from local businesses. This month **XOX Salon and Spa**, located at 4458 N Milwaukee, has donated a \$20.00 gift card.

If you are already a member just come to the May 12th meeting for your chance to win. If you have not joined yet, bring your completed form and check or cash for the appropriate amount and you will be entered to win!

Each month we will draw a winner based on donations recieved. You must be present to win. See you there

**Membership Application/Renewal Form**

Name \_\_\_\_\_

Address \_\_\_\_\_

Phone \_\_\_\_\_ E-Mail \_\_\_\_\_

Would you like to receive the PPNA News via e-mail?  Yes

This is a  New Membership  Renewal

I would like to help with:

- |  |  |
|--|--|
| <input type="checkbox"/> Community Service   | <input type="checkbox"/> Social Events               |
| <input type="checkbox"/> Newsletter          | <input type="checkbox"/> Economic Development/Zoning |
| <input type="checkbox"/> Newsletter Delivery | <input type="checkbox"/> Senior Activities           |
| <input type="checkbox"/> Website Development | <input type="checkbox"/> Children's Activities       |

Membership renewals are due January 1 and expire December 31

Mail form and check to: PPNA Membership, 4105 N Leamington, Chicago IL, 60641

Make your check payable to Portage Park Neighborhood Association

Membership dues: Seniors-\$6, Household-\$12, Business-\$20

**May 12<sup>TH</sup>**  
**Public Meeting Agenda**

**I. Call to Order - 7:30pm**

**II. President's Opening Statement**

**III. Secretary's Report**

Minutes of the March meeting

**IV. Treasurers Report**

**V. Committee Reports**

- A. Garden Club
- B. Seniors Club
- C. Parents Coffee
- D. Economic Development
- E. Membership
- F. Newsletter
- G. Traffic

**VI. Guest Speaker**

Luann Hamilton, Director of Transportation Planning with CDOT will speak about the proposed Mid-City Transit Way.

**VII. Public Announcements**

The next public meeting of the neighborhood association will be on May 14th, 2003.

The first Portage Park Family Bike Ride is on Saturday, May 10, starting at 8 am. Meeting point is at Portage Park.

**VIII. Old Business**

**IX. Open Forum**

**X. Door Prize Drawing**



**Sweet  
Mysteries  
Bakery**

*You won't find us an every corner!™*

Monday thru Friday:  
6:00 a.m. to 5:00 p.m.  
Saturday:  
8:00 a.m. to 5:00 p.m.  
Sunday:  
8:00 a.m. to 1:00 p.m.

**4229 W. Montrose  
773.282.2989**

Are you an at-home mom (full or part time) looking for a way to connect with other like-minded women? Check out [www.MothersandMore.org](http://www.MothersandMore.org) or contact Annette Baase, 725-6585, for information on the local chapter.

## Are you looking for a Sitter?

Available day or evening!  
Weekday and weekends!  
Reliable and energetic!

Call Antonetta at  
**282-1120**

## Parents Coffee

Wednesday, May 21, 10-Noon at 5038 W. Berteau. Host is Renata Hughes. All parents and kids are welcome. Please bring a small treat to share. Remember you're always welcome to bring a friend to any of these events. For questions or suggestions please call Maria Pollock at 286-6368.

## Lets Swim!!

Portage Park Pool is scheduled to open on Friday May 23rd for more details please contact portage park at (312) 742-7634

## "Mom's Night Out"

Thursday, May 29 at 7:00 pm.  
Meet at Suparossa  
4256 N. Central Ave.,  
773.736.5828.

Join us for appetizers, drinks, dinner or all of the above. All are welcome. For questions call Annette, 725-6585.

## For Sale

Dania Black laminate Office Desk, Return and Shelves.  
In great shape.

Asking \$150 for all 3 pieces.  
Call John at 283-9887

Desk dimensions:  
30"d x 64"w x 29"h

Members, post your note for free! Call 283-9887 or send it to us at [ppnboard@hotmail.com](mailto:ppnboard@hotmail.com)

## Portage Park Events

### Movies in the Park

Stuart Little II-Thursday, June 26th Dusk

### Concerts in the Park

Big Band-Wednesday July 9th, 7pm

Big Band-Thursday August 7th, 7pm



Tune, Oil &  
Filter change  
**\$21.95**  
w/ coupon

or **\$100 off**  
any new or used  
car purchase.

5373 N. Milwaukee Ave.

Coupon must be presented at time of purchase or service time-up.  
CBI & Blue-ovals good on CBI vehicles only.

Robert Elworth 773-259-4019

## Old Irving Park Paint & Remodeling, Inc.

Your Neighborhood Quality Home Service

Free Estimates • Quality Work at a Reasonable Price • Fully Insured

## Spa Now Open!



Monday-Friday: 9am-7pm  
Saturday: 7am-4pm  
Sunday: 8am-2pm  
773.777.9997

4458 N. Milwaukee Ave.

We are now a full service hair salon and day spa. Featuring a full range of relaxing facials, massages, manicures and pedicures.

## Lerner knows your neighborhood

The Lerner Times knows Portage Park



For local news, local sports, local entertainment and local schools, subscribe to your community newspaper.

Subscribe for \$16.50 a year

Call today! (847) 329-2055

Lerner  
Newspapers

# Bark Out Loud

Dog Grooming and Pet Supplies

5232 W. Irving Park Rd.  
Chicago, Illinois 60641  
(Irving Park & Laramie)

Call for an appointment  
(773) 427 - 0955

**\$5 Off Grooming with this Coupon**

(all breeds, first time customers only)

handball swimming FitSTART racketball dance  
There's a **Y** in every community  
and a community in every **Y**  
Irving Park YMCA  
4251 W. Irving Park Road  
(773) 777-7500  
Bring this ad in for one free guest pass or 10% off of any program  
aerobics cardio 'Mazing Kids basketball camps

## Police Solve Third Area Shooting in Recent Years

By Patrick Villalobos and Mark W. Anderson

On April 24th, a shooting took place at approximately 5:30 am at the Dunkin Donuts in Veterans Square. According to the Chicago Tribune, Sukhdev Dave, 29, an Indian immigrant who lived in the 3900 block of West Ainslie Street, was shot and killed in an unprovoked early morning attack. Police quickly circulated a composite sketch the gunman, who was apprehended late in the afternoon of the 28th.

This most recent shooting brings to three the number of area homicides in the past two years. Last summer's murder on the 5200 block of West Hutchinson remains unsolved, although it is "still under investigation" according to Officer Penny Daniels at a recent Beat 1624 C.A.P.S. meeting. "We haven't forgotten it and we have more people working on it" she said. Information on the 2001 murder at Belle Plaine and Laverne was not released by the State's Attorney's office when called. Calls to the 16th district neighborhood relations office were not returned about this subject.

Despite the relatively low murder rate when compared to other parts of the city, PPNA feels strongly that these recent shooting are a matter of great concern to our community. We believe the residents of the community at large can go a long way in helping to keep the neighborhood safe, and should make every effort to take responsibility towards their neighborhood. Please call 911 whenever there is something that could be considered unusual, such as someone looking suspicious through windows, looking in car windows while walking down the street, loud yelling in alley ways, or anything that may be cause for concern. Together, we can help keep our neighborhood safe as well as a pleasant place to live and raise our families.

Good Food. Good Drink. Good Social.



*Gale Street Inn*  
Since 1963

4914 N Milwaukee (Plenty of Free Parking in TFC Bank Lot)

Dine-In (773) 725-1300 Carry-Out

\$10 off for PPNA members (reg. \$65).

María Pollock

Piano Tuner

5129 W. Hutchinson Chicago, IL 60641  
(773) 286 6368

### Declaración de la misión de la asociación de la vecindad Portage Park

La asociación de la vecindad de Portage Park es una organización de la comunidad formada de los residentes locales y los dueños de negocio. Representamos el área limitada por Cicero (este), Central (oeste), Grace (sur) y Montrose (norte). Nuestra misión es promover el bienestar y espíritu de la comunidad de Portage Park a: trabajar con oficiales públicos, y otras organizaciones para asegurar la calidad y actividad de servicios públicos y privados y mantener seguridad; promover Portage Park como un lugar para conducir negocio y facilitar desarrollo; coleccionar y distribuir información sobre la comunidad y proveer un foro para los dueños de residencias y de negocios; establecer consenso en tales asuntos y hablar como una voz uniforme para la comunidad; promover un espíritu de cooperación, de voluntad y de buenas relaciones de vecindad, y animar a gente a que se comuniquen y participe abiertamente en el intercambio de ideas.

### Oswiadczenie zadan PPNA

PPNA jest organizacja społeczna składająca się z lokalnych rezydentów oraz właścicieli biznesów. Reprezentujemy obszar Cicero (Wschód), Central (Zachód), Grace (Południe), Montrose (Północ). Naszym Zadaniem jest promowanie pomyślności i przynależności do społeczności Portage Park poprzez: Prace z urzędnikami miejskimi oraz innymi organizacjami dla zapewnienia wysokiej jakości wszelkich odbywających się imprez oraz dla ogólnego bezpieczeństwa. Promowanie Portage Park jako miejsca do prowadzenia biznesu a także umożliwiającego rozwój. Zbieranie i dystrybucje informacji o społeczności a także zapewnianie miejsc spotkań rezydentów i właścicieli biznesów z przedstawicielami. PPNA. Wzrost jedności na tematy dotyczące tutejszej społeczności a także reprezentowanie ich „wyżej.” Promowanie ducha współpracy, dobrej woli oraz wzajemnej, sąsiedzkiej życzliwości a także zachęcanie do otwartych rozmów oraz uczestniczenia w wymianie idei.

### Portage Park Neighborhood Association Mission Statement

The Portage Park Neighborhood Association is a community organization comprised of local residents and business owners. We represent the area bounded by Cicero (east), Central (west), Grace (south) and Montrose (north). Our mission is to promote the welfare and spirit of the Portage Park community to: Work with public officials, and other organizations to ensure the quality and activity of public and private community services and maintain safety; Promote Portage Park as a place to conduct business and facilitate development; Collect and distribute information about the community and provide a forum for residents and business owners; Gain consensus on such topics and speak as a uniform voice for the community; Promote a spirit of cooperation, goodwill and neighborliness, and encourage people to openly communicate and participate in the exchange of ideas.

**CITY NEWSSTAND**

4018 NORTH CICERO AVENUE CHICAGO, IL 60641 773 545-7377

CHICAGO'S LARGEST MAGAZINE SELECTION

OPEN 7 AM TILL 11 PM 7 DAYS A WEEK

WWW.CITYNEWSSTAND.COM

The Portage Park Neighborhood Association News is a publication of the PPNA. PPNA Board Members are:

Adrienne O'Brien - President  
Gerard Staniszewski - Garden Club  
John Arena - Communications  
Phil Kinsella - Treasurer  
Mark Anderson - Director at Large

Patrick Villalobos - Vice President  
Ellen Stoner - Economic Development  
Maria Pollock - Secretary  
Beth Kinsella - Membership

For more information about the PPNA and/or the PPNA News, e-mail us at:

E-mail at [ppna\\_board@hotmail.com](mailto:ppna_board@hotmail.com). On-line at [www.portage-park.org](http://www.portage-park.org)